

Cromerica CTFax

[Introduction](#)

[Getting Started](#)

- [Add and Configure Modem](#)
- [Add new user](#)

[Software and Hardware Requirements](#)

[About CTFax](#)

[List of supported fax modems](#)

[After Successful installation](#)

[License](#)

[How to share a modem with RAS \(for Internet access\) ?](#)

[Cromerica CTFax Pro and Microsoft Exchange Server Integration](#)

Introduction

Cromerica CTFax is a family of network fax service systems for Microsoft Windows networks. The system in general supports concurrent sending and receiving of multiple fax documents utilizing one or more fax modems attached to the CTFax server, by one or more registered users. Please see your license agreement for the details on number of modems and users supported by your version.

About CTFax

The system was designed and implemented from the ground up, and takes the advantage of the Microsoft Windows NT architecture. The system features robust and flexible fax server, and simple, straightforward and intuitive fax client processing capabilities for users on the Windows desktop.

The following are the three basic components of the system:

- Fax Server
- Client application with fax viewer
- Print fax driver

The Fax Server is responsible for multiple modems handling, multiple remote client connection request validation and handling, fax messages queue handling and global address book management. **Client application with fax viewer** is responsible for managing fax messages, while the **Print fax driver** responsibility is to aid any Windows application that is capable of printing documents to fax the same.

Software and Hardware Requirements

To run Cromerica CTFax server software you need:

- IBM compatible PC with 486 or better processor
- Microsoft Windows NT 3.51 or above
- Approximately 1 MB RAM for CTFax Server software.
- 2 MB hard disk space for CTFax Software
- One or more Class 2 or Class 2.0 fax modems
- Network card and functioning network to communicate with clients.

To install the Cromerica CTFax Workstation (client) software you need:

- IBM compatible PC with 386 or better processor
- Microsoft Windows 95 or above, or Windows NT 3.51 or above
- 2MB hard disk space
- Network card and functioning network to send and receive faxes.

License

CROMERICA CTFAX FAMILY SOFTWARE ("Software") LICENSE AGREEMENT

You assume responsibility for the selection of the Software to achieve your intended results and for the proper installation, use and results obtained from use of the Software.

THE SOFTWARE IS PROVIDED "AS IS" WITHOUT WARRANTY OF ANY KIND, EITHER EXPRESS OR IMPLIED, INCLUDING, WITHOUT LIMITATION, ANY WARRANTY OF MERCHANTABILITY AND FITNESS FOR A PARTICULAR PURPOSE. THE ENTIRE RISK AS TO THE RESULTS AND PERFORMANCE OF THE SOFTWARE IS ASSUMED BY YOU, AND CROMERICA TECHNOLOGIES, LLC ASSUME NO RESPONSIBILITY FOR THE ACCURACY OR APPLICATION OF OR ERRORS OR OMISSIONS IN THE SOFTWARE. IN NO EVENT SHALL CROMERICA TECHNOLOGIES, LLC BE LIABLE FOR ANY DIRECT, INDIRECT, SPECIAL, INCIDENTAL OR CONSEQUENTIAL DAMAGES ARISING OUT OF THE USE OR INABILITY TO USE THE SOFTWARE, EVEN IF CROMERICA TECHNOLOGIES, LLC HAVE BEEN ADVISED OF THE LIKELIHOOD OF SUCH DAMAGES OCCURRING. SHALL NOT BE LIABLE FOR ANY LOSS, DAMAGES OR COSTS, ARISING OUT OF, BUT NOT LIMITED TO, LOST PROFITS OR REVENUE, LOSS OF USE OF THE SOFTWARE, LOSS OF DATA OR EQUIPMENT, THE COSTS OF RECOVERING SOFTWARE, COMMUNICATION CHARGES, DATA OR EQUIPMENT, THE COST OF SUBSTITUTE SOFTWARE OR DATA, CLAIMS BY THIRD PARTIES, OR OTHER SIMILAR COSTS.

CTFax Installation

In order to install 'CTFax' you have to log in as '**Administrator**' and run the installation program (**A:\CTFax???.exe**).

During installation you will have to choose your **default fax server** and if you are installing server part, to **add fax users** (clients) **and determine their rights in the system**.

The 'Administrator' user must also **configure modem(s)** that will be used.

This can be done at a later time using 'CTFax Manager' application.

After successful installation you will find the '**CTFax Printer**' added to your system along with other existing printer(s) and '**CTFax Manager**' application, '**CTFax Readme**', '**CTFax License Agreement**' and '**CTFax Help**' files under Start->Programs tray.

CTFax Configuration

After successful installation, '**Administrator**' user is already registered in user database so (s)he should add new users, determine their privileges in the system, add and configure modems and other fax server relevant parameters using CTFax Manager application.

Using CTFax Manager

You can find 'CTFax Manager' application under Start->Programs->CTFax. To select specific action, you have to select proper item on the left pane, then move the mouse on the right pane and use **right mouse button** to obtain a list of possible actions. Another way, is to use **keyboard** with 'Action' **menu** (of course, proper item on the left pane must be selected).

CTFax Manager Lists

In the left pane of 'CTFax Manager' application, you can see 'Personal Folders' and 'Fax Servers' items. In the right pane you can see corresponding lists.

Personal folders

The lists placed underneath Personal Folders tree (Input Box, Output Box, Dispatch Box and Address Book) are personal lists of that specific user who has started 'CTFax Manager' application. Each list has its directory on client computer disk.

Input Box

Input Box is a list of received faxes. Every time when user selects Input Box, 'CTFax Manager' connects itself to the 'CTFax Server' and asks for a received faxes list. If it finds something a dialog box with corresponding message will appear. New faxes show themselves in Input Box together with existing ones.

Output Box

Output Box is indeed a list of unsent faxes. If user tries to send fax and fax server doesn't receive it (maybe because it is turned off), the fax will go into user's Output Box, so that it can be resent at a later time.

Dispatch Box

Dispatch Box is a list of received anonymous faxes. When a new fax arrives through modem, recipient is usually unknown (that's while they are called anonymous). We should emphasize here, that there is possibility in the message format to have an information about final recipient. This means that all faxes received via modem, a priori, shouldn't be anonymous. However, this useful feature isn't implemented at present time.

Every time when user who has 'Dispatch faxes' rights selects Dispatch Box, 'CTFax Manager' connects itself to the 'CTFax Server' and asks for a received anonymous faxes list. If it finds something a dialog box with corresponding message will appear.

User with 'Dispatch faxes' permission can then take a look into a contents (usually only first, so called: 'Cover page', where usually resides information for whom is that fax destined) and, now when he knows for whom is that fax in question destined, to dispatch that fax to the concrete user.

It can be assumed that the 'dispatcher' duty in a greater company, would probably be handled by administrative assistant.

Personal Address Book

Personal Folders->Address Book is local address book (user's private address book) used for saving her/his friend or business partner addresses.

Fax Server

Registered Users

Registered Users folder contains a list of fax users (clients) and their rights in the system.

Fax Server

Modems

Modems folder contains different modem configurations.

Fax Server

Global Receiving Queue & Global Sending Queue

Global Receiving Queue and Global Sending Queue folders contains list of all faxes received or waiting to be sent, respectively with all relevant information.

Fax Server

Personal Receiving Queue & Personal Sending Queue

Personal Receiving Queue and Personal Sending Queue folders contains list of user's faxes received or waiting to be sent, respectively with all relevant information.

Fax Server

Global Journal & Personal Journal

Global Journal and Personal Journal lists contains information about all or user's sent /received faxes together with other relevant information.

Fax Server

Global Address Book

Global Address Book is system wide address book used for saving business partner addresses.

Fax Server

Event Log

Event Log keeps a track of all system wide important error and warning messages.

Adding a new user

To add new users into CTFax Server database, you have to select 'Registered Users', under 'Fax Servers' -> "Your_FaxServer_Name", and then either click right mouse button or use menu 'Action' -> 'Right Pane Action' to select 'Add' option.

User rights

In 'Add User' dialog box you can grant to user the following rights:

- Global Address Book Change;
- Dispatch faxes;
- Administration.

User with 'Global Address Book Change' permission can read/write/modify global address book (which resides on the server computer), all others can only read global address book but they can manage their personal address books (which resides on their local computer). Global address book should contain addresses of interest for company as a whole (business partners, etc.).

User with 'Dispatch faxes' permission can dispatch anonymous faxes.

When a new fax arrives through modem, recipient is usually unknown (that's while they are called anonymous). We should emphasize here, that there is possibility in the message format to have an information about final recipient. This means that all faxes received via modem, a priori, shouldn't be anonymous. However, this useful feature isn't implemented at present time.

User who has 'Dispatch faxes' rights, can obtain anonymous faxes from server, take a look into a contents (usually only first, so called: 'Cover page', where usually resides information for whom is that fax designated) and, now when he knows for whom is that fax in question designated, to dispatch that fax to the concrete user.

It can be assumed that the 'dispatcher' duty in a greater company, would probably be handled by administrative assistant.

To make it clear, we will describe the receiving fax procedure:

Server puts a newly received fax into receiving queue where all received faxes resides until user with 'Dispatch faxes' right pick's up a list of all or some of an anonymous faxes.

When the dispatcher (user with 'Dispatch faxes' right) gets an anonymous faxes list, the anonymous faxes are transferred to the dispatcher's client computer, where (s)he activates Dispatch function and writes, in a dialog box, a fax recipient user name.

Dispatch function then returns fax to server, which puts it in a receiving queue (but now this fax is no longer anonymous, now it has a specific destination).

Let us assume that this fax was for user with user name 'max'. When user 'max' next time starts his 'CTFax Manager' and selects 'Input Box', in order to check newly received faxes, he will get from server all faxes destined to him. The faxes are transferred to his computer and deleted from server (server only keeps a track of all sent/received faxes and not the faxes itself).

The user can then or at a later time, obtain a list (journal) containing information about all of his sent/received faxes.

User with 'Administration' permission can add/delete users, modify their rights in the system and read/write/modify port and modem configurations.

'Administrator' (user with CTFax 'Administration' right) can manage global receiving/sending queue and global journal lists including right to delete (abort) any fax request, while ordinary user can manage only his/her request(s).

'Administrator' can see server's log (SysLog) where he can find some useful information

about server errors and warnings.

Note: After adding all users you no longer need to be logged as an 'Administrator'.

Adding a new fax modem

User with '**Administration**' permissions can read/write/modify port and modem configurations using '**CTFax Manager**' application.

To **configure port(s)** and **modem(s)** on CTFax Server you have to select '**Modems**', under 'Fax Servers' -> "Your_FaxServer_Name", and then either click right mouse button or use menu 'Action' -> 'Right Pane Action' to select specific option (**Add, Copy, Edit, Delete, ...**).

In most cases, you will find that default values are working fine, otherwise you will need to change offending parameter(s).

Standard options

Some of the parameters are self explaining, while others may be rather cryptic at first sight. We will explain, in short, their action:

Port Name Serial port name (eg. COM2);
Modem Name Fax modem name (eg. 3Com, Hayes, Telebit)
Configuration Enabled ... Enables/Disables this configuration profile
Port Data Rate Serial port data rate determines character speed between PC and modem (eg. 38400)
Fax Modem Data Rate Fax Modem Data Rate determines speed between two fax modems (eg. 14400)
Send/Receive Mode This line will be used for sending faxes only, receiving only, or both(sending and receiving)
Rings Before Answer Defines number of rings before answering when receiving through modem
Pulse/Tone Dial Pulse (rotary) or tone (MFC) dialing when sending over modem
Dial Prefix The number needed to reach an outside line when sending over modem, such as 9, or 7,. Do not enter an area code in this field. Use a comma after each numeric code, such as 9,. The comma produces a pause so that your phone system has a chance to respond after the previous input.

Note: *If your fax and voice line share the same number, and if the phone line has **CallWaiting**, then incoming calls can interrupt the fax transmission. Most phone systems allow you to disable call waiting by dialing either 1170 or *70 before you make a call. By entering this code in '**Disable Call Waiting String**' field (Advanced options), you ensure that fax transmissions are not interrupted by call waiting. You can disable call waiting for outgoing faxes only.*

Flow Control The method of regulating the flow of information between your PC and modem. **HW(RTS/CTS) flow control** is the most preferable choice

Note: *You should always use flow control. If your modem doesn't react as it should and/or you get a message from the system that your modem is configured without flow control, find specific command in your modem user's guide and write it in '**Additional Init String**' box (Advanced options). Eg. AT S58=2 S68=255 defines HW (RTS/CTS) flow control for Telebit World Blazer modem. Other modems may have different init string (eg. AT &K3). Refer to your modem user's guide for specific command, if default one doesn't work.*

Advanced options

Speaker Volume You can choose between (Low, Medium and High)

Speaker On/Off Turns speaker On, Off, On Until Carrier, etc.

Disable Call Waiting String ... If your fax and voice line share the same number, and if the phone line has **CallWaiting**, then incoming calls can interrupt the fax transmission. Most phone systems allow you to disable call waiting by dialing either 1170 or *70 before you make a call. By entering this code in '**Disable Call Waiting String**' field (Advanced options), you ensure that fax transmissions are not interrupted by call waiting. You can disable call waiting for outgoing faxes only.

Class2DataRateBitOrder '**Standard**' behavior for class2 fax modems is to reverse data bit order when receiving faxes. If it is not case with your modem, you can choose different setting.

Additional Init String You can put here any specific modem command you like, and it will be executed after standard initialization.

List of supported fax modems and multiport cards

List of supported fax modems (Class2 & Class2.0)

- 3Com (Us Robotics) Sportster 28,800(33,600) / Class2.0
- Hayes Accura 28,800 / Class 2
- Telebit WorldBlazer / Class 2
- ELSA MicroLink 33.6 TQV / Class 2.0
- ZyXEL Elite 2864 / Class 2.0
- ZyXEL U-336S / Class 2.0
- ProLink (Rockwell chipset) 1436 V.34 / Class2
- Practical Peripherals PM 144 MT II / Class2

List of supported multiport serial cards

- DigiBoard PC/Xe 64k

CTFax Installation Guide

INTRODUCTION

This document describes installation procedure for CTFax, Cromerica Technologies LLC, client-server fax system for Microsoft Windows NT.

When you install 'CTFax' on your computer(s), you will have access to fax service from any client computer which resides on your LAN (client side doesn't need modem of any kind at their site). Of course, you can install both client and server part on same computer too.

The system supports concurrent sending and receiving of multiple fax documents utilizing one or more fax modems attached to the fax server and unlimited number of users.

About CTFax

The system was designed and implemented from the scratch, and takes the advantage of the Microsoft Windows NT architecture. The system features robust and flexible fax server, and simple, straightforward and intuitive fax client processing capabilities for users on the Windows desktop.

The following are the three basic components of the system:

- Fax Server
- Client application with fax viewer
- Print fax driver

The Fax Server is responsible for multiple modems handling, multiple remote client connection request validation and handling, fax messages queue handling and global address book management. Client application with fax viewer is responsible for managing fax messages, while the Print fax driver responsibility is to aid any Windows application that is capable of printing documents to fax the same.

Specifications

'CTFax' program is intended to be used on Microsoft Windows NT 4.0 (server part & client part) and Microsoft Windows 95 (client part only).

The system supports concurrent sending and receiving of multiple fax documents utilizing one or up to 128 fax modems attached to the fax server and unlimited number of users. Some of supported hardware is listed at the end of this document (including multiport serial cards, modems, ... etc.)

Please note that 'CTFax' can exchange faxes with any Group 3 fax device (fax machine), but on the server side we do support only class2 & class2.0 fax modems (the older class1 fax modems aren't supported).

Some of supported hardware is listed at the end of this document (including multiport serial cards, modems, ... etc.)

License

See [License](#).

CTFax Install

In order to install 'CTFax' you have to log in as 'Administrator' and run installation program (A:\CTFax?.exe).

During installation you will have to choose your default fax server and if you are installing server part, to add fax users (clients) and determine their rights in the system.

The 'Administrator' user must also configure modem(s) that will be used.

This can be done at a later time using 'CTFax Manager' application.

After successful installation you will find the 'CTFax Printer' added to your system along with other existing printer(s) and 'CTFax Manager' application, 'CTFax Readme', 'CTFax License Agreement' and 'CTFax Help' files under Start->Programs tray.

CTFAX CONFIGURATION

After successful installation, 'Administrator' user is already registered in user database so (s)he should add new users, determine their privileges in the system, configure modems and other fax server relevant parameters using 'CTFax Manager' application.

HOW TO USE CTFAX MANAGER ?

You can find 'CTFax Manager' application under Start->Programs->CTFax.

To select specific action, you have to select proper item on the left pane, then move the mouse on the right pane and use right mouse button to obtain a list of possible actions. Another way, is to use keyboard with 'Action' menu (of course, proper item on the left pane must be selected).

CTFAX MANAGER LISTS

In the left pane of 'CTFax Manager' application, you can see 'Personal Folders' and 'Fax Servers' items. In the right pane you can see corresponding lists.

Personal folders

The lists placed underneath Personal Folders tree (Input Box, Output Box, Dispatch Box and Address Book) are personal lists of that specific user who has started 'CTFax Manager' application. Each list has its directory on client computer disk.

Input Box

Input Box is a list of received faxes. Every time when user selects Input Box, 'CTFax Manager' connects itself to the 'CTFax Server' and asks for a received faxes list. If it finds something a dialog box with corresponding message will appear. New faxes show themselves in Input Box together with existing ones.

Output Box

Output Box is indeed a list of unsent faxes. If user tries to send fax and fax server doesn't receive it (maybe because it is turned off), the fax will go into user's Output Box, so that it can be resent at a later time.

Dispatch Box

Dispatch Box is a list of received anonymous faxes. When a new fax arrives through modem, recipient is usually unknown (that's while they are called anonymous). We should emphase here, that there is possibility in the message format to have an information about final recipient. This means that all faxes received via modem, apriori, shouldn't be anonymous. However, this useful feature isn't implemented at present time.

Every time when user who has 'Dispatch faxes' rights selects Dispatch Box, 'CTFax

Manager' connects itself to the 'CTFax Server' and asks for a received anonymous faxes list. If it finds something a dialog box with corresponding message will appear.

User with 'Dispatch faxes' permission can then take a look into a contents (usually only first, so called: 'Cover page', where usually resides information for whom is that fax destined) and, now when he knows for whom is that fax in question destined, to dispatch that fax to the concrete user.

It can be assumed that the 'dispatcher' duty in a greater company, would probably be handled by administrative assistant.

Personal Address Book

Personal Folders->Address Book is local address book (user's private address book) used for saving her/his friend or business partner addresses.

Fax Server

Registered Users

Registered Users folder contains a list of fax users (clients) and their rights in the system.

Modems

Modems folder contains different modem configurations.

Global Receiving Queue & Global Sending Queue

Global Receiving Queue and Global Sending Queue folders contains list of all faxes received or waiting to be sent, respectively with all relevant information.

Personal Receiving Queue & Personal Sending Queue

Personal Receiving Queue and Personal Sending Queue folders contains list of user's faxes received or waiting to be sent, respectively with all relevant information.

Global Journal & Personal Journal

Global Journal and Personal Journal lists contains information about all or user's sent /received faxes together with other relevant information.

Global Address Book

Global Address Book is system wide address book used for saving business partner addresses.

Event Log

Event Log keeps a track of all system wide important error and warning messages.

HOW TO ADD A NEW USER ?

To add new users into CTFax Server database you have to select 'Registered Users' , under 'Fax Servers' -> "Your_FaxServer_Name", and then either click right mouse button or use menu 'Action' -> 'Right Pane Action' to select 'Add' option.

User rights

In 'Add User' dialog box you can grant to user following rights:

- Global Address Book Change;
- Dispatch faxes;
- Administration.

User with 'Global Address Book Change' permission can read/write/modify global address book (which resides on the server computer), all others can only read global address book but they can manage their personal address books (which resides on their local computer). Global address book should contain addresses of interest for company as a whole (business partners, etc.).

User with 'Dispatch faxes' permission can dispatch anonymous faxes.

When a new fax arrives through modem, recipient is usually unknown (that's while they are called anonymous). We should emphasize here, that there is possibility in the message format to have an information about final recipient. This means that all faxes received via modem, a priori, shouldn't be anonymous. However, this useful feature isn't implemented at present time.

User who has 'Dispatch faxes' rights, can obtain anonymous faxes from server, take a look into a contents (usually only first, so called: 'Cover page', where usually resides information for whom is that fax designated) and, now when he knows for whom is that fax in question designated, to dispatch that fax to the concrete user.

It can be assumed that the 'dispatcher' duty in a greater company, would probably be handled by administrative assistant.

To make it clear, we will describe the receiving fax procedure:

Server puts a newly received fax into receiving queue where all received faxes reside until user with 'Dispatch faxes' right pick's up a list of all or some of an anonymous faxes.

When the dispatcher (user with 'Dispatch faxes' right) gets an anonymous faxes list, the anonymous faxes are transferred to the dispatcher's client computer, where (s)he activates Dispatch function and writes, in a dialog box, a fax recipient user name.

Dispatch function then returns fax to server, which puts it in a receiving queue (but now this fax is no longer anonymous, now it has a specific destination).

Let us assume that this fax was for user with user name 'max'. When user 'max' next time starts his 'CTFax Manager' and selects 'Input Box', in order to check newly received faxes, he will get from server all faxes destined to him. The faxes are transferred to his computer and deleted from server (server only keeps a track of all sent/received faxes and not the faxes itself).

The user can then or at a later time, obtain a list (journal) containing information about all of his sent/received faxes.

User with 'Administration' permission can add/delete users, modify their rights in the system and read/write/modify port and modem configurations.

'Administrator' (user with CTFax 'Administration' right) can manage global receiving/sending queue and global journal lists including right to delete (abort) any fax request, while ordinary user can manage only his/her request(s).

'Administrator' can see server's log (SysLog) where he can find some useful information about server errors and warnings.

Note: After adding all users you no longer need to be logged as an 'Administrator'.

HOW TO ADD A NEW MODEM ?

User with 'Administration' permission can read/write/modify port and modem configurations using 'CTFax Manager' application.

To configure port(s) and modem(s) on CTFax Server you have to select 'Modems', under 'Fax Servers' -> "Your_FaxServer_Name", and then either click right mouse button or use

menu 'Action' ->'Right Pane Action' to select specific option (Add, Copy, Edit, Delete, ...).

In most cases, you will find that default values are working fine, otherwise you will need to change offending parameter(s).

Standard options

Some of the parameters are self explaining, while others may be rather cryptic at first sight. We will explain, in short, their action:

- Port Name Serial port name (eg. COM2);
- Modem Name Fax modem name (eg. 3Com, Hayes, Telebit, ...);
- Configuration Enabled ... Enables/Disables this configuration profile;
- Port Data Rate Serial port data rate determines character speed between PC and modem (eg. 38400);
- Fax Modem Data Rate Fax Modem Data Rate determines speed between two fax modems (eg. 14400);
- Send/Receive Mode This line will be used for sending faxes only, receiving only or both(sending and receiving);
- Rings Before Answer Defines number of rings before answering when receiving through modem;
- Pulse/Tone Dial Pulse (rotary) or tone (MFC) dialing when sending over modem;
- Dial Prefix The number needed to reach an outside line when sending over modem, such as 9, or 7,. Do not enter an area code in this field. Use a comma after each numeric code, such as 9,. The comma produces a pause so that your phone system has a chance to respond after the previous input.

Note: If your fax and voice line share the same number, and if the phone line has CallWaiting, then incoming calls can interrupt the fax transmission. Most phone systems allow you to disable call waiting by dialing either 1170 or *70 before you make a call. By entering this code in 'Disable Call Waiting String' field (Advanced options), you ensure that fax transmissions are not interrupted by call waiting.

You can disable call waiting for outgoing faxes only.

- Flow Control The method of regulating the flow of information between your PC and modem. HW(RTS/CTS) flow control is the most preferable choice.

Note: You should always use flow control. If your modem doesn't react as it should and/or you get a message from the system that your modem is configured without flow control, find specific command in your modem user's guide and write it in 'Additional Init String' box (Advanced options).

Eg. AT S58=2 S68=255 defines HW (RTS/CTS) flow control for Telebit World Blazer modem. Other modems may have different init string (eg. AT &K3).

Refer to your modem user's guide for specific command, if default one doesn't work.

Advanced options

- Speaker Volume You can choose between (Low, Medium and High);
- Speaker On/Off Turns speaker On, Off, On Until Carrier, ... etc.;
- Disable Call Waiting String ... If your fax and voice line share the same number, and if the phone line has CallWaiting, then incoming calls can

interrupt the fax transmission. Most phone systems allow you to disable call waiting by dialing either 1170 or *70 before you make a call. By entering this code in 'Disable Call Waiting String' field (Advanced options), you ensure that fax transmissions are not interrupted by call waiting. You can disable call waiting for outgoing faxes only.

Class2DataRateBitOrder 'Standard' behavior for class2 fax modems is to reverse data bit order when receiving faxes. If it is not case with your modem, you can choose different setting.

Additional Init String You can put here any specific modem command you like, and it will be executed after standard initialization.

How to share a modem with RAS (for Internet access) ?

For CTFax to share a fax modem with RAS (Remote Access Service), set the modem to Send Mode only, and make sure in RAS the modem is configured for Dial Out Only mode.

To set a CTFax used modem to Send Mode only, use CTFax Manager.

Select "Modems", then select the fax modem entry in the right pane. Double click on the entry, or select "Modem" and "Edit" from the menu. The "Edit Modem Configuration" dialog will show up. Make sure in "Send/Receive Mode" the "Send" is selected. Click Ok to reinitialize fax modem.

To set RAS to Dial Out only mode, use Control Panel.

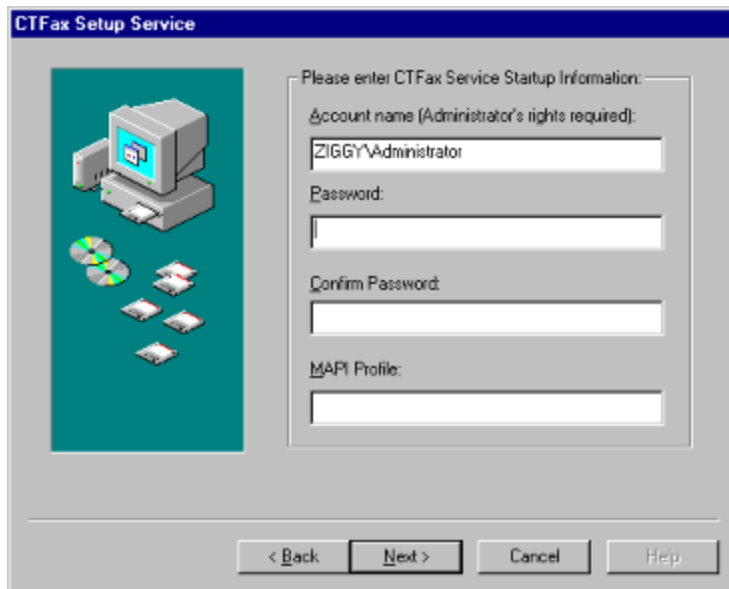
Note: See Microsoft Windows NT 4.0 documentation for more on RAS configuration.

Select Network in Control Panel. Select "Services" tab, then "Remote Access Service", then "Properties...". Select a device to share the fax modem with CTFax, and select "Configure...". In "Configure Port Usage" dialog make sure "Port Usage" is set to Dial Out only. Click on Ok if you needed to change the device to Dial Out only mode.

Cromerica CTFax Pro and Microsoft Exchange Server Integration

IMPORTANT PLEASE READ BEFORE INSTALLING CTFAX PRO

NOTE: If you don't plan to enable Cromerica CTFax and Microsoft Exchange integration at this time, make sure to clear the Account name edit box when asked for by the CTFax Pro Setup on CTFax Setup Service page. Please enter any MAPI Profile name to continue to the next page.



CTFax Pro is capable to route received fax messages to users of Microsoft Exchange Server. Users can use either CTFax Manager, Microsoft Exchange client, or Microsoft Outlook to view received faxes.

In order to enable Cromerica CTFax Pro - Microsoft Exchange Server integration, the following information is needed by CTFax Pro Setup:

1. User name for the Windows NT account with Administrator's rights to the system.
2. Password for the user with the Administrator's rights from step 1, and
3. MAPI Profile name which has a Microsoft Exchange Service enabled and working

After successful installation, in order for users to receive fax messages via Microsoft Exchange Server, their email address must be known to CTFax Pro Server. Use CTFax Manager to edit each registered user email address field to match their user name on the Microsoft Exchange System.

In order to view the fax messages, users must install Cromerica CTFax Workstation components on their system.

